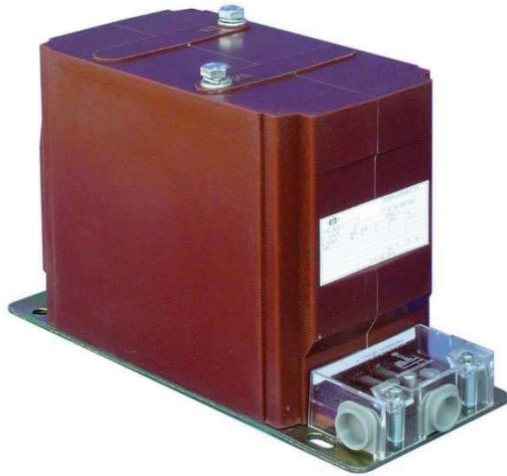




Indoor voltage transformer up to 24 kV Type GSZS 12 | 17,5 | 24

Possible models GSZS 12 / 24

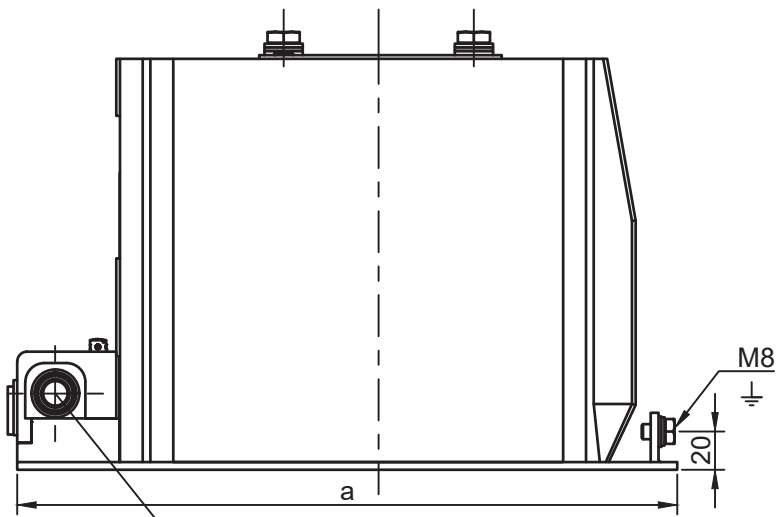


- block type
- double-pole insulated
- cast resin insulation
- standards GOST 1983-2015 / IEC 61869-1 & -3
- for measurement and protection equipment

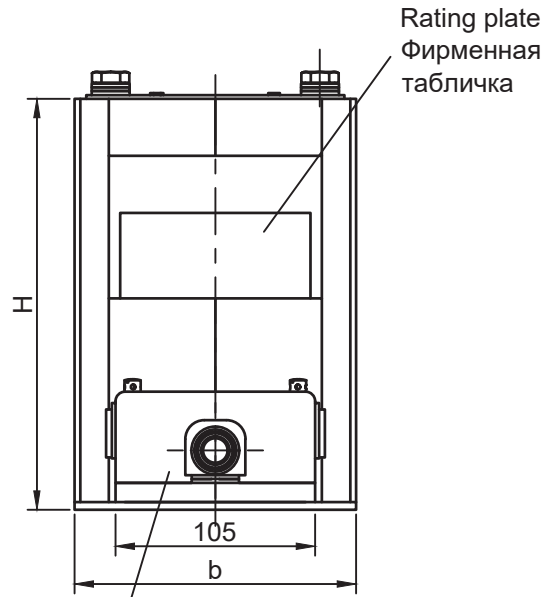
Technical data		GSZS 12	GSZS 24
Rated voltage, U_r	kV	6 ... 11	13,8 ... 20
Highest voltage for equipment, U_m	kV	7,2 ... 12	17,5 ... 24
Test voltage (short-duration withstand rated lightning-impulse withstand)	kV	28 (42) 75; 38 95	50 (65) 125
Rated primary voltage, U_{pr}	V	3000 ... 11000	13800 ... 20000
Rated secondary voltage, U_{sr} (measurement winding)	V	100; 110; 230	
Rated secondary voltage, U_{sr} (earth winding)	V	-	
Accuracy class - measurement winding		0,2; 0,5; 1; 3	
Rated power, S_r - measurement winding - earth winding	V·A	5 ... 150 -	5 ... 150 -
Thermal limiting output - measurement winding	V·A	up to 600	up to 600
Rated voltage factor		$1,2 \times U_r$	
Rated frequency	Hz	50 (60 on request)	
Ambient temperature	°C	-5°C ... +40°C	
Insulation class		E (120 °C)	
Protection class		IP40	
Flexing strength	N	<500	
Mounting position		of no significance	
Lifetime	years	>30	
Weight	kg	17 ... 25	35 ... 40

Subject to Technical Changes.



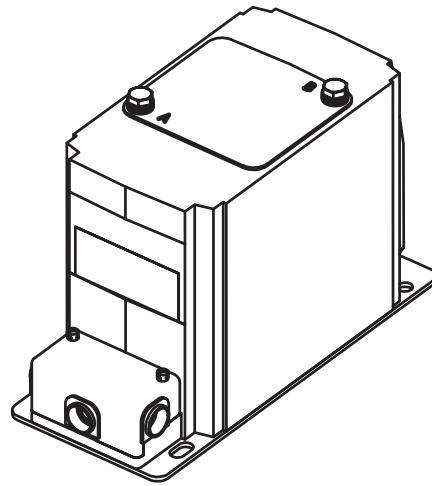
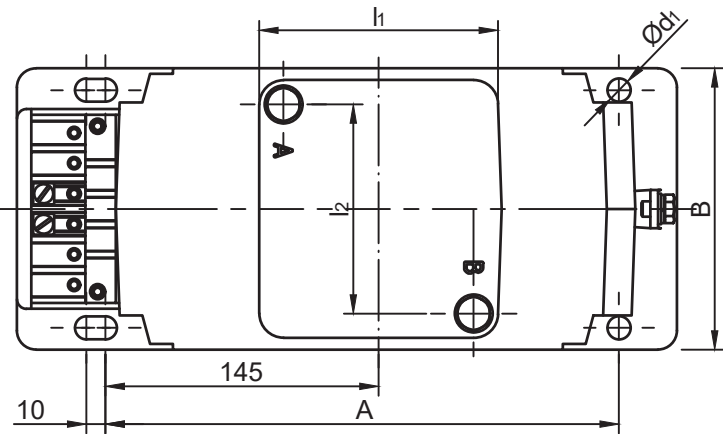


Cable gland Pg16
Кабельный вывод Pg16



Rating plate
Фирменная табличка

Terminal box
Клеммная коробка



	GSZS12	GSZS24
A	270	280
B	125	150
a	347	355
b	148	178
d₁	12	14
H *	220 (334)	280 (377)
l₁	100	165
l₂	110	130

Sizes in mm / Размеры в мм

* The height with fuse is given in brackets. /
Высота с предохранителем указана в скобках.

